

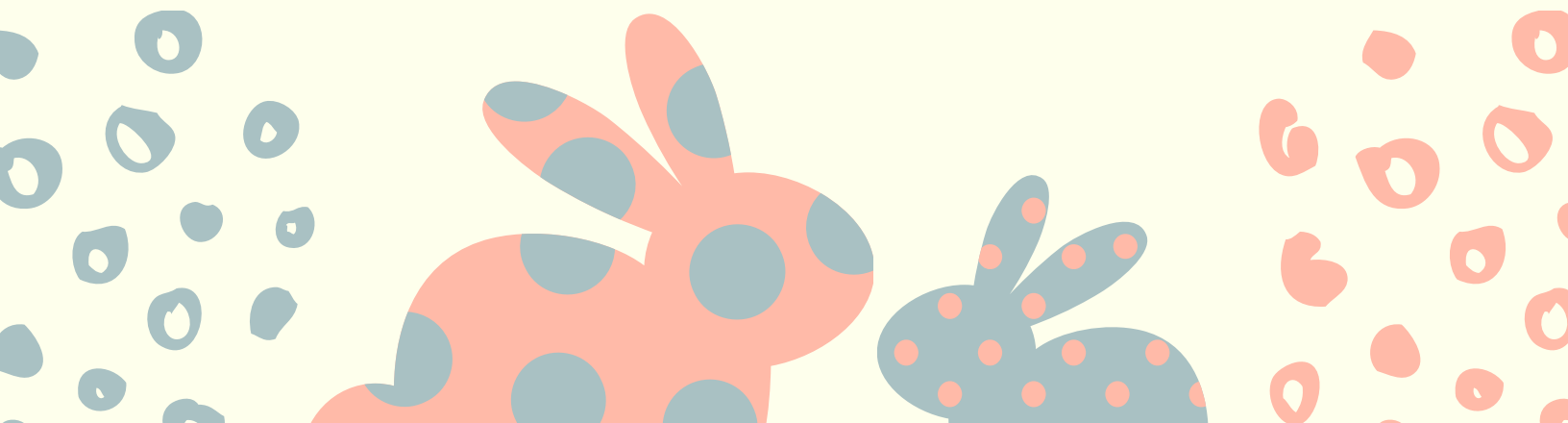


**NORTHEAST ARKANSAS
RABBIT BREEDERS
ASSOCIATION**

Spring Show 2023

**March 31st-April 1st, 2023
Jonesboro, Arkansas**

**Arkansas State Equine Center
3207 E Johnson Ave**





Judges

ALLEN MESICK (CA)
CHRIS ZEMNY (CA)
JOSH HUMPHRIES (TN)
ANDY HIGH (AL)
GENE GILLISPIE (MO)
MELISSA MAGEE (CA)
JUSTIN LOWE (IN)
DANIELLE LOWE (IN)
ALAN RAFFERTY (CA)
MADDIE PRATT (MI)
SCOTT RODRIGUEZ (WY)

NEARB reserves the right to add and/or substitute judges as needed.

Registrar

TBA

If you plan to register rabbits please bring your ARBA card, complete 3 generation pedigree, and \$6 per rabbit.





Schedule of Events

FRIDAY, MARCH 31ST

3 P.M. - SHOWROOM OPENS

6:30 P.M. - CHECK IN CLOSSES

7 P.M. - SINGLE OPEN/SINGLE YOUTH ALL
BREED SHOW BEGINS

SATURDAY, APRIL 1ST

6 A.M. - SHOWROOM OPENS

8 A.M. - CHECK IN CLOSSES

8:30 A.M. - DOUBLE OPEN/DOUBLE
YOUTH ALL BREED SHOW BEGINS

8:30 A.M. - CAVY SHOW BEGINS

NEARB specialty shows will take place
throughout the day on Saturday, April 1st,
following the start of the all breed show.





Entries


PRE ENTRIES: \$4/RABBIT OR CAVY PER SHOW

**ABSOLUTELY NO LATE OR DAY OF SHOW
ENTRIES WILL BE ACCEPTED.**

**Pre-entries must be emailed to
nearabbitbreeders@gmail.com by
midnight, Monday, March 27th.**

**MAILED ENTRIES MUST BE POSTMARKED
BY MARCH 20TH AND SENT TO ERIN
ROBERTS, 205 WHITEWOOD LANE,
CRAWFORDSVILLE, AR, 72327**

**Any entries scratched or exhibitors who enter
and do not attend the show must pay all
entries fees unless the secretary is notified
prior to midnight on Monday, March 27th.**





Show Staff

SHOW SUPERINTENDENT

FAITH JONES

870-919-1171

SHOW SECRETARY

ERIN ROBERTS

NEARABBITBREEDERS@GMAIL.COM

870-919-1171

SHOW LOGISTICS

JAMES CUNNINGHAM

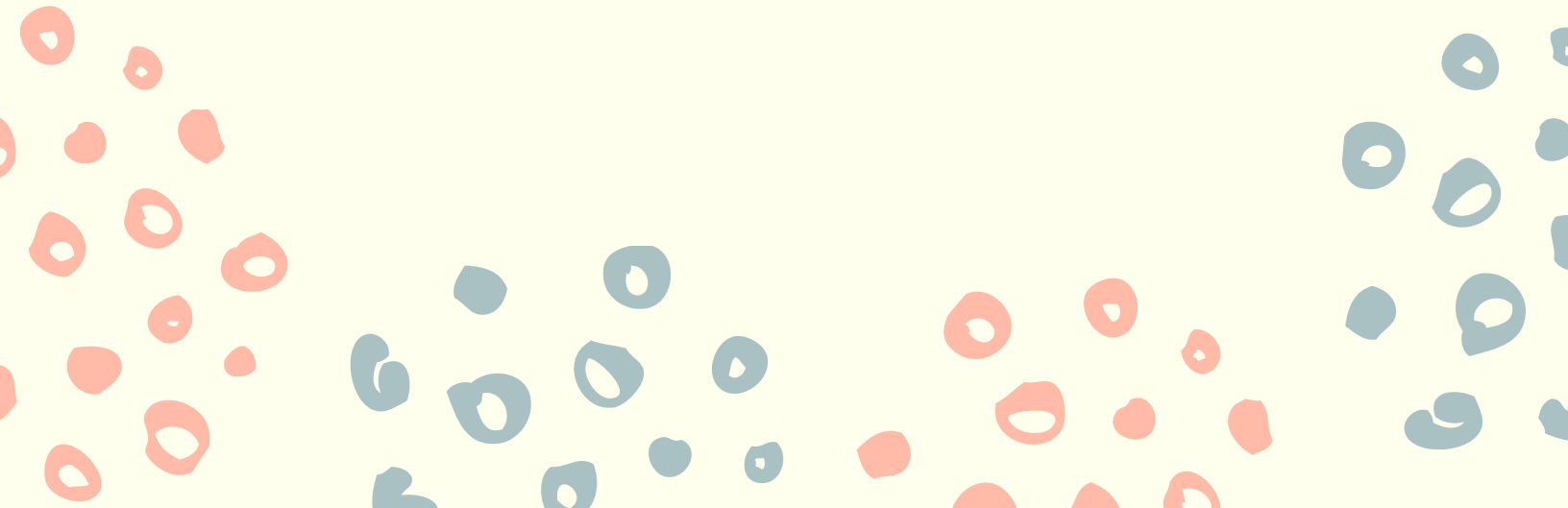




Breed Sanctions

**BREED SANCTIONS TO BE ANNOUNCED.
ALL BREED SANCTIONS WILL BE MADE
BY EXHIBITOR DONATION. YOUR BREED
DOES NOT HAVE TO BE SANCTIONED IN
ORDER TO SHOW.**

**PLEASE REQUEST ADDITIONAL
SANCTIONS THROUGH SHOW
SECRETARY, ERIN ROBERTS AT
NEARABBITBREEDERS@GMAIL.COM**





NORTHEAST ARKANSAS RABBIT
BREEDERS ASSOCIATION

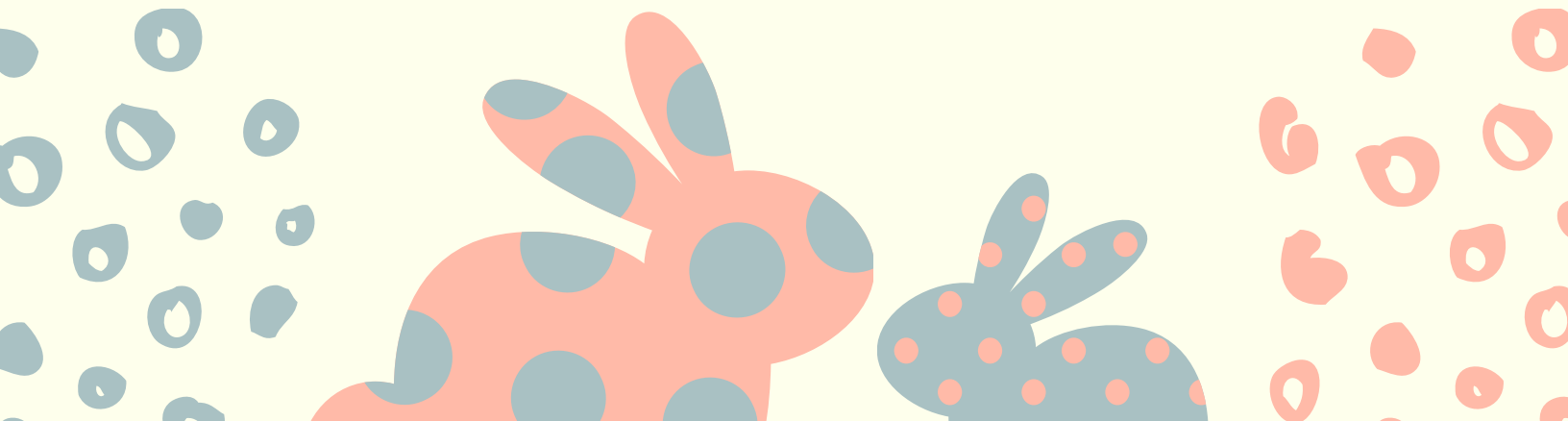
Double Gavy Show

Judge: Melissa Magee (CA) & Gene
Gillispie (MO)

Saturday, April 1st at 8:30 a.m.
Check in by 8 a.m.

Pre entries: \$4/cavy per show
Absolutely no day of show entries will be
accepted. Pre entries must be emailed to
nearabbitbreeders@gmail.com by midnight
on Monday, March 27th.

ACBA sanctioned





Specialty Shows

ALL SPECIALTY SHOWS WILL TAKE PLACE ON SATURDAY, APRIL 1ST
YOUTH ARE WELCOME AND ENCOURAGED TO SHOW IN OPEN SPECIALTY
SHOWS WHERE NO YOUTH OPTION IS OFFERED.

MINI REX SPECIALTY (OPEN & YOUTH)

PRE ENTRY: \$4/RABBIT

ENTRIES: NEARABBITBREEDERS@GMAIL.COM

POLISH SPECIALTY (OPEN ONLY) - DOUBLE SPECIALTY

PRE ENTRY: \$4/RABBIT PER SHOW

ENTRIES: NEARABBITBREEDERS@GMAIL.COM

LOTS OF LOPS SHOW (OPEN ONLY)

BREEDS: AMERICAN FUZZY LOP, ENGLISH LOP, FRENCH LOP, HOLLAND LOP, MINI LOP

PRE ENTRY: \$4/RABBIT

ENTRIES: NEARABBITBREEDERS@GMAIL.COM

FLUFF WARS SHOW (OPEN ONLY)

BREEDS: AMERICAN FUZZY LOP, ANGORAS, JERSEY WOOLY, LIONHEAD

PRE ENTRY: \$4/RABBIT

ENTRIES: NEARABBITBREEDERS@GMAIL.COM

MEAT LOVERS SHOW (OPEN ONLY)

BREEDS: 6 CLASS BREEDS AND ANY BREEDS TYPICALLY USED FOR MEAT PRODUCTION
PURPOSES

PRE ENTRY: \$4/RABBIT

ENTRIES: NEARABBITBREEDERS@GMAIL.COM






Show Rules

1. THIS IS A CARRYING CAGE SHOW. LEAK PROOF CARRIERS ARE REQUIRED.
2. NEARB IS NOT RESPONSIBLE FOR LOSS DUE TO FIRE, THEFTS, ACCIDENTS, OR DEATH OR RABBIT(S).
3. UNRULY CHILDREN WILL NOT BE TOLERATED.
4. ANY ANIMAL SHOWING SIGNS OR SYMPTOMS OF DISEASE WILL BE REMOVED FROM THE SHOWROOM PROMPTLY.
5. ALL YOUTH ENTRIES MUST BE PLACED ON THE TABLE BY A YOUTH EXHIBITOR.
6. NEARB WILL FOLLOW THE OFFICIAL SHOW RULES OF THE AMERICAN RABBIT BREEDERS ASSOCIATION, INC. OFFICIAL SHOW RULES CAN BE FOUND ON THE ARBA WEBSITE.

*PLEASE ATTEND THE 100TH ARBA CONVENTION
LOUISVILLE, KENTUCKY
OCTOBER 6TH-11TH, 2023*

OPEN SANCTIONED SHOW - OFFICIAL ARBA SANCTIONED SHOW, ARBA EXECUTIVE DIRECTOR, PO BOX 5667, BLOOMINGTON, ILLINOIS 61702. ARBA WEBSITE: WWW.ARBA.NET. MEMBERSHIP DUES: \$20.00 PER YR., 3 YRS. \$50.00. COMBINATION HUSBAND & WIFE: \$30.00 PER YR., 3 YRS. \$75.00.
YOUTH SANCTIONED SHOW - OFFICIAL ARBA YOUTH SANCTIONED SHOW, ARBA EXECUTIVE DIRECTOR, PO BOX 5667, BLOOMINGTON, ILLINOIS 61702. ARBA WEBSITE: WWW.ARBA.NET. MEMBERSHIP DUES: \$12.00 PER YR., 3 YRS. \$30.00.





RHD Rules

1. 1-THE AMERICAN RABBIT BREEDERS ASSOCIATION WILL CANCEL AND RESCHEDULE SANCTIONS AT NO COST TO THE CLUBS FOR SHOW SITE LOCATIONS WITHIN 125 MILES, WHICH HAD A CONFIRMED OUTBREAK OF RCV/RHD/VHD IN DOMESTIC RABBITS WITHIN THE PAST 60 DAYS OF THE ENTRY DEADLINE. A HOST CLUB MUST REFUSE ENTRIES FROM EXHIBITORS PLACING AN ENTRY FROM ALL LOCATIONS WITHIN 125 MILES, WHICH HAD A CONFIRMED OUTBREAK OF RCV/RHD/VHD IN DOMESTIC RABBITS WITHIN THE PAST 60 DAYS OF THE ENTRY DEADLINE.
 2. 2- THE AMERICAN RABBIT BREEDERS ASSOCIATION WILL CANCEL AND RESCHEDULE SANCTIONS AT NO COST TO THE CLUBS FOR SHOW SITE LOCATIONS WITHIN 30 MILES, WHICH HAD A CONFIRMED OUTBREAK OF RCV/RHD/VHD IN WILD / FERAL RABBITS WITHIN THE PAST 60 DAYS OF THE ENTRY DEADLINE. A HOST CLUB MUST REFUSE ENTRIES FROM EXHIBITORS PLACING AN ENTRY FROM ALL LOCATIONS WITHIN 30 MILES, WHICH HAD A CONFIRMED OUTBREAK OF RCV/RHD/VHD IN WILD / FERAL RABBITS WITHIN THE PAST 60 DAYS OF THE ENTRY DEADLINE.
 3. 3- PLEASE NOTE THE FOLLOWING RECOMMENDATIONS:
 4. A) EXHIBITORS MUST FOLLOW ARBA RECOMMENDED BIOSECURITY GUIDELINES.
 5. B) EXHIBITORS AND SHOW OFFICIALS MUST WASH THE UNDERCARRIAGE AND TIRES OF ALL VEHICLES AND TRAILERS BEFORE GOING TO AND AFTER DEPARTING A SHOW.
 6. C) EXHIBITORS RESIDING IN A STATE WITH A CONFIRMED CASE OF RHDV IN THE PAST 60 DAYS MUST HAVE A HEALTH CERTIFICATE (CVI) ISSUED WITHIN FOURTEEN (14) DAYS OF THE SHOW.
 7. D) USE AN APPROPRIATE DISINFECTANT THAT WILL INACTIVATE RHDV.
 8. E) THE ARBA CLUB SHOW COMMITTEE HAS THE RIGHT TO REFUSE AN ENTRY.
 9. F) THE ARBA RECOMMENDS CARRYING CAGES BE CLEANED PRIOR TO GOING TO A SHOW. THE ARBA RECOMMENDS THE FOLLOWING PRODUCTS: KITTY LITTER, NEWSPAPER, PUPPY PADS, OR OTHER INERT PRODUCTS USED FOR BEDDING.
 10. G) STATE AND COUNTY OFFICIALS MAY IMPOSE ADDITIONAL STRICTER SANCTIONS / REQUIREMENTS.
 11. H) SHOW OFFICIALS CAN DESIGNATE ADDITIONAL REQUIREMENTS TO ATTEND AN ARBA SANCTIONED SHOW.
 12. I) IF YOU ARE NOT COMFORTABLE PLEASE CONTINUE TO MAINTAIN BIOSECURITY AT YOUR RESIDENCE.
- 